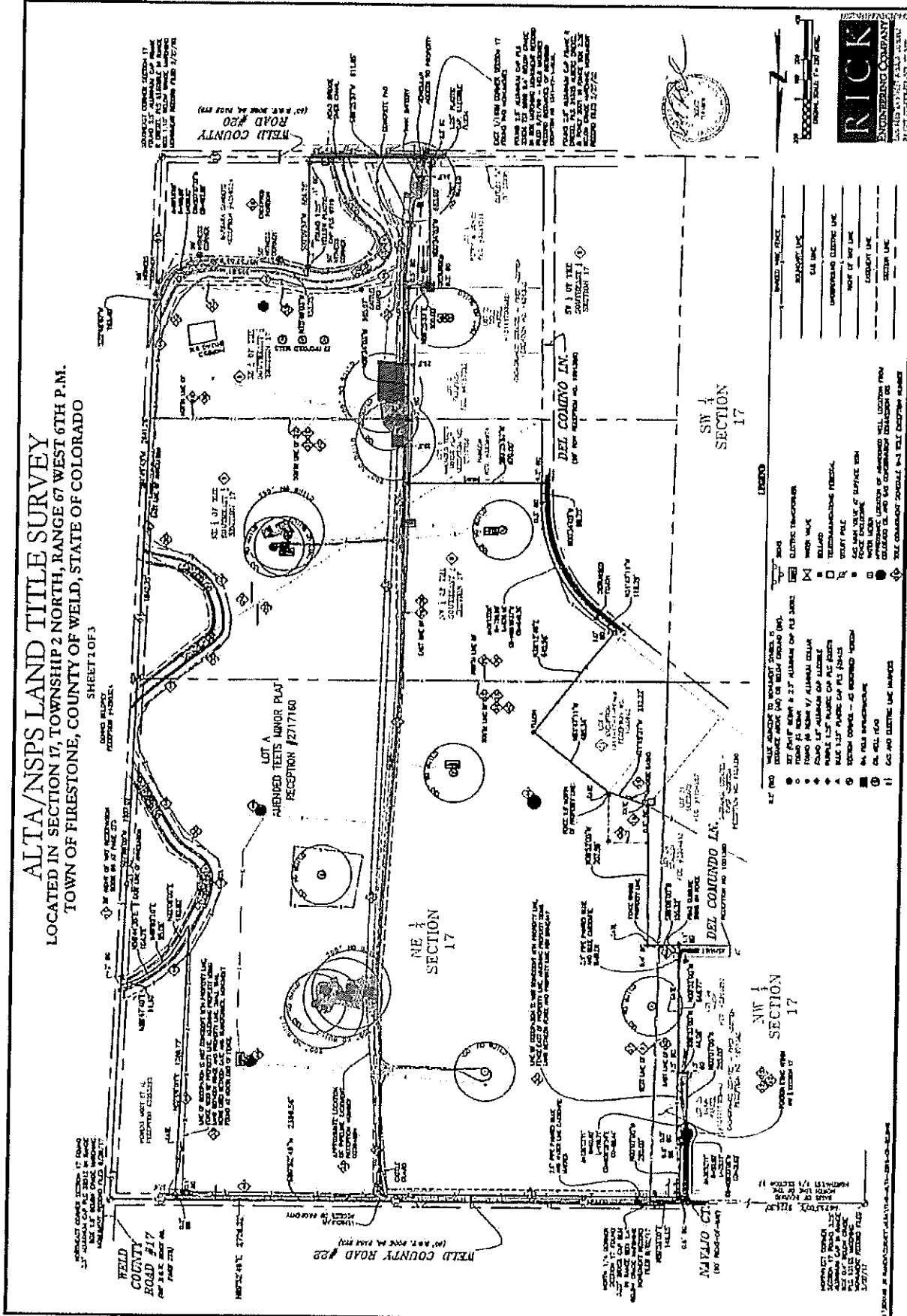


Skyview Meadows Metropolitan District

ALTA/NSPS LAND TITLE SURVEY
 LOCATED IN SECTION 17, TOWNSHIP 2 NORTH, RANGE 67 WEST 6TH P.M.
 TOWN OF FIRESTONE, COUNTY OF WELD, STATE OF COLORADO

SHEET 1 OF 3



LEGEND

Symbol	Description
Circle with dot	WELL
Circle with cross	WELL HEAD
Circle with 'X'	WELL
Circle with 'A'	WELL
Circle with 'B'	WELL
Circle with 'C'	WELL
Circle with 'D'	WELL
Circle with 'E'	WELL
Circle with 'F'	WELL
Circle with 'G'	WELL
Circle with 'H'	WELL
Circle with 'I'	WELL
Circle with 'J'	WELL
Circle with 'K'	WELL
Circle with 'L'	WELL
Circle with 'M'	WELL
Circle with 'N'	WELL
Circle with 'O'	WELL
Circle with 'P'	WELL
Circle with 'Q'	WELL
Circle with 'R'	WELL
Circle with 'S'	WELL
Circle with 'T'	WELL
Circle with 'U'	WELL
Circle with 'V'	WELL
Circle with 'W'	WELL
Circle with 'X'	WELL
Circle with 'Y'	WELL
Circle with 'Z'	WELL



RECEIVED
 FEB 03 2020
 Div of Local Government

Skyview Meadows Metropolitan District

EXHIBIT A

Legal Description

Lot A,
AMENDED TEETS MINOR PLAT,
Town of Firestone,
County of Weld,
State of Colorado

RECEIVED

FEB 03 2020

Div of Local Government